

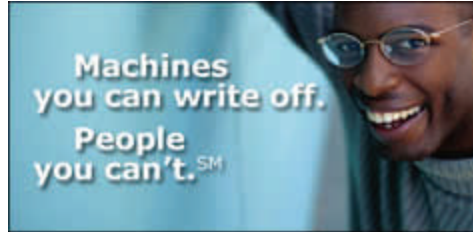
Benefits of Donating

Thank you to all our donors who have already, through the generous contributions of their used computer and related technology, helped to make an important difference in people's lives and to our environment.

Donating your used equipment has a positive impact on many fronts as people learn new skills that help them take pride in themselves and their accomplishments. Sufficient access to technology can mean independence, employment and the opportunity to lead more meaningful lives.

How can donating used technology benefit YOU?

- It's a simple way to dispose of used equipment you no longer want, at no cost to you.
- Helps the environment by keeping working equipment out of local landfills.
- You may qualify for a tax deduction.
- It helps your community when non-profit agencies and low-income families can have computers.
- Your company gets access to a valuable pool of workers being trained with the technology skills you need.



Computer Refurbishing & Technical Assistance Center

606 West Fourth Avenue, Suite 11
Tallahassee, FL 32303

Phone: 850-575-4309
Fax: 850-576-0696
E-mail: info@cr-ta.org

Serving non-profit human service agencies
and their clients in Leon and surrounding counties.

Microsoft®
Authorized Refurbisher

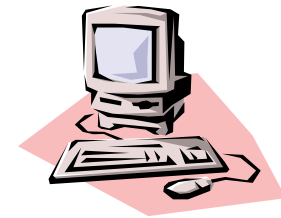
A program of
Lutheran Social Services of North Florida
in partnership with
Florida State University College of Information



Make A Donation

Computer Systems
Printers
Hard drives
RAM
CD drives
17' plus CRT monitors
LCD or Plasma monitors

Working to
"Close the Gap"



Tel: 850-575-4309

Donation Requirements

We try to make it easy for anyone to donate computers and other technology equipment. When you donate a computer to the Computer Refurbishing and Technical Assistance Program at Lutheran Social Services of North Florida, it's important that it meet minimum specifications to ensure that it can be refurbished and distributed as a usable system. Basic PC donation requirements are listed below. Macintosh donations are considered on a case-by-case basis.

For PC Desktop

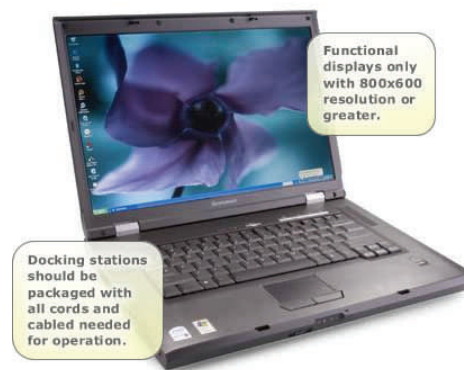
- Pentium III & Higher CPUs (**486, Pentium I and II no longer accepted**). Alternative CPUs accepted if Pentium III equivalent (700 MHz) or better.
- If your computer donation includes a complete system (**Hard Drive, Monitor, Keyboard, & Mouse**), please include as many of the required cables and connectors as possible.
- If possible, please include Software License Agreements for installed computer software.

A PC Desktop is considered a full system if it contains all of the items shown below.



For PC Laptop

- Pentium II & Higher CPUs Accepted (**64+Mb RAM Only**).
- If possible, please include Software License Agreements for installed software.
- Hardware needing repair is considered on a case-by-case basis.



Items to donate

- CDROM Drive
- Copier Machine
- CPU w/o Monitor, Keyboard & Mouse
- Digital Camera/Video Camera
- Docking Station
- Pen/Drawing Tablet
- All-In-One Printer/Fax
- Document Fed/Flatbed Scanner
- Hard Disk Drive
- Keyboard
- Mouse
- Network Devices
- Network Interface Card
- Plotter
- Printer
- Sound Card
- Video Card
- External Drives
- Cables and Connectors

Computer Refurbishing & Technical Assistance Center

606 West Fourth Avenue, Suite 11
Tallahassee, FL 32303

Phone: 850-575-4309
Fax: 850-576-0696
E-mail: info@cr-ta.org
WWW.CR-TA.ORG

Want more information of donating computers? Go to WWW.CR-TA.ORG and click on **Ten Tips for Donating a Computer.**